

18. Reinstall the grill to the grill mounting casting.

19. Install a Woodruff key in each end of the drive shaft and install a coupler on each end of the shaft. Do not tighten the set screws.

20. Remove the four $3/8 \times 1 3/4$ bolts that hold the grill mounting casting to the frame of the tractor. Install four $3/8 \times 2 1/4$ inch bolts in their place. The pump mounting bracket is installed on these four bolts.

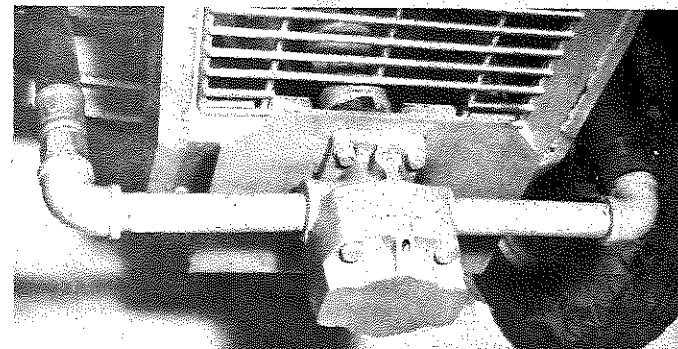
21. Install the pump mounting bracket to the tractor and at the same time install the drive shaft with a insert in each of the two couplers.

NOTE:

Washers are supplied to be used as shims between the pump mounting bracket and the tractor frame to insure proper alignment of the shafts and to provide a solid mounting on the tractor. Make sure the drive shafts are aligned. Poor alignment will cause premature wear on the couplers.

CAUTION:

Do not attempt to drive the coupling on the pump drive shaft or severe damage to the pump will result, voiding the pump warranty!



22. Adjust the couplings on the drive shafts so the connection is snug. Tighten all set screws securely.

23. Install the fan electrical wire by routing it under the tractor frame away from moving parts and then up to the positive terminal of the battery.

24. On Models 102 & 122, install the seat to the mounting brackets, with two $3/8 \times 1$ bolts in the front two holes of the mounting brackets.

25. On Model 100 install the channel weldment to the seat mount bracket with one $1/2 \times 1$ inch bolt through the front hole in the channel weldment and the front hole in the seat mount bracket.

Install the seat to the seat mount bracket and channel weldment with a $1/2 \times 1 1/2$ inch bolt through the rear hole provided.

INSTALLATION INSTRUCTIONS

1200 GROUNDSAW

TO MOUNT ON IHC 100, 102, 122

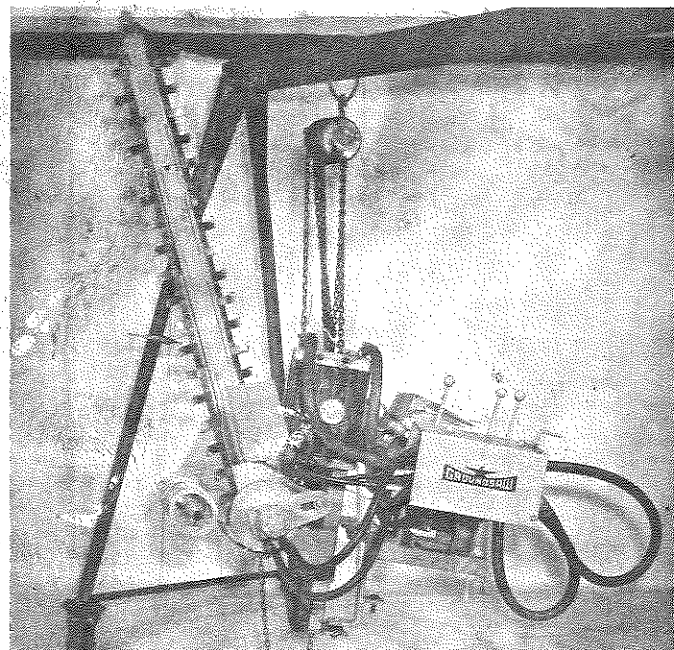
HAWK BILT MFG. CORP.

VINTON, IOWA

These instructions cover the installation of the 1200 Groundsaw Trencher on the IHC Models 100, 102 & 122. When the trencher is received all hydraulic connections are sealed at the factory and need not be disassembled to install the trencher on the tractor. If at any time the connections are disassembled, extreme care must be exercised to keep foreign material from entering the hydraulic system.

1. Remove the Model 1200 Groundsaw from the shipping crate.

2. Support the Groundsaw from a hoist as shown for ease of mounting.



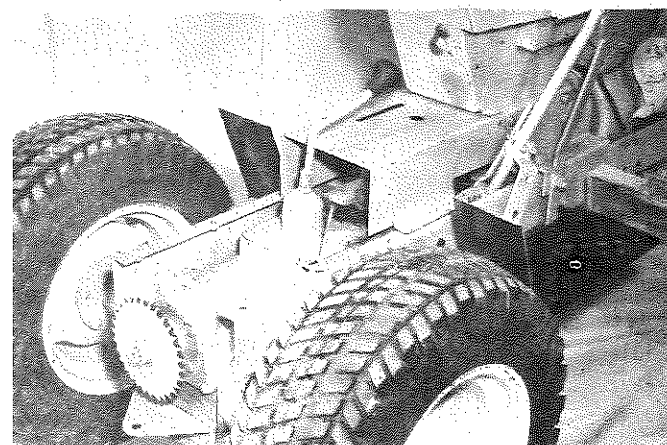
3. Remove the fenders from the tractor on Models 102 & 122. Remove the seat mount on the Model 100. The seat will be re-installed later.

4. Install the tractor PTO shaft as outlined in the instructions provided by International Harvester Company.

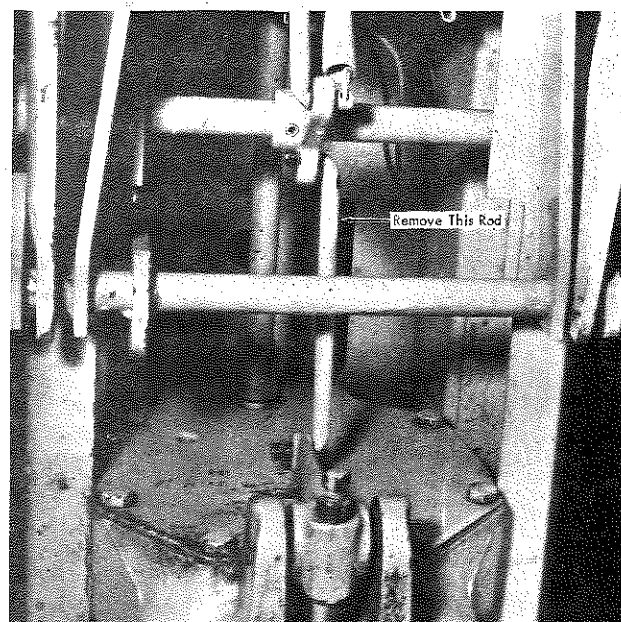
5. Install the drive sprocket to the tractor PTO shaft. This sprocket will be lined up with the traction motor sprocket. In step 14.

6. Install the new style foot rest on both sides of the Model 100. (Style supplied on Model 102 and 122.)

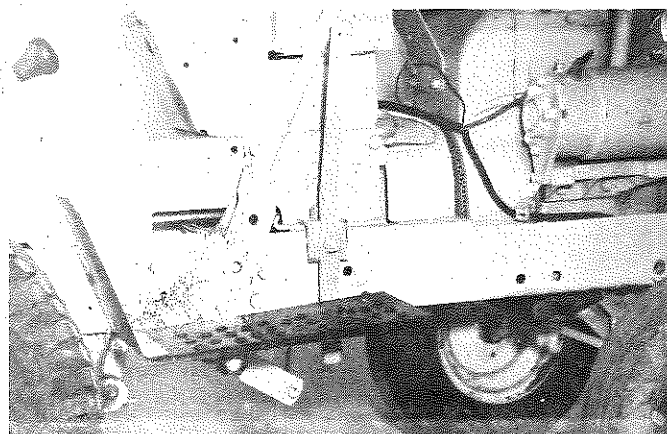
7. Install the two heel guards to the foot rests as shown.



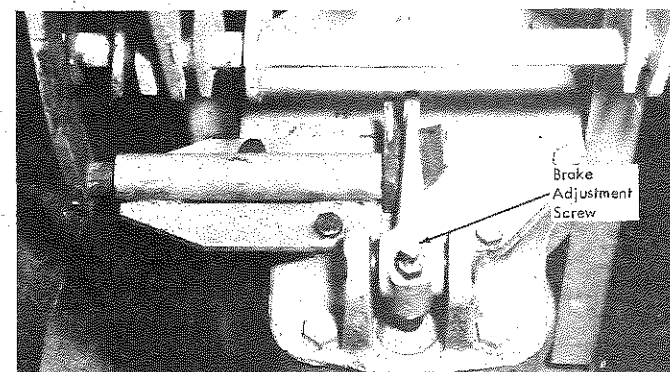
8. Remove the rod connecting the clutch lever to the brake arm.



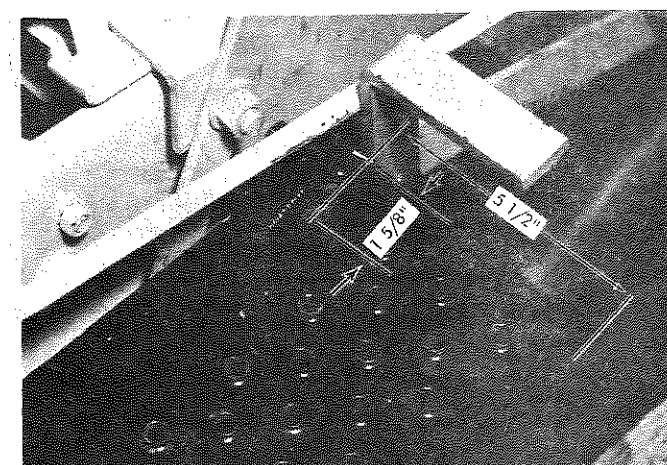
9. Install the brake locking arm as shown.



10. Install the brake pedal as shown using two 3/8 x 1 bolts.



11. Drill a 5/16 inch hole in the right foot rest to the dimensions shown.

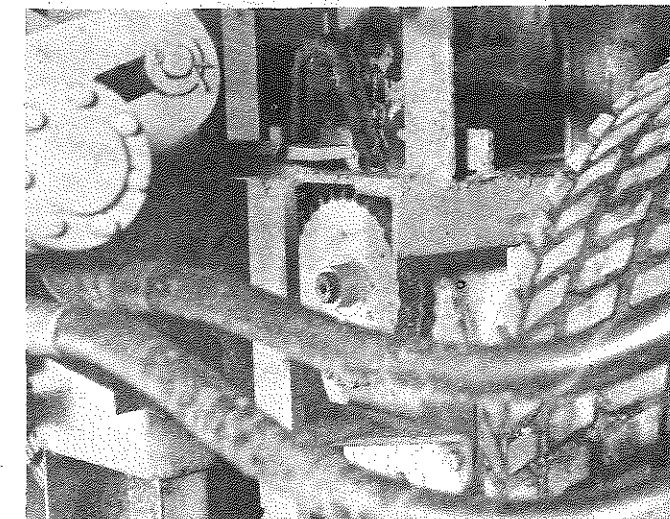


12. Install the 1/4 x 5 bolt through the 5/16 inch hole and through the hole in the brake pedal. Install a spring, washer, another spring and washer, and then the lock-nuts.

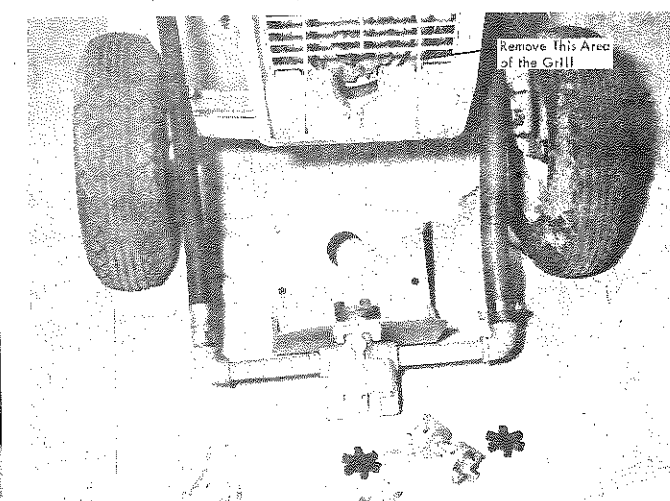
Adjust the brake linkage so the brake can be fully applied and will not drag when the brake pedal is released.

13. Install the trencher seat bracket to the tractor with four 3/8 x 1 bolts and one 5/8 x 1 3/4 inch bolt through the trencher bracket and the tractor drawbar.

14. Align the PTO sprocket with the traction motor sprocket and install the drive chain. Adjust the drive chain so it has 1/2 inch slack.



15. Remove the grill from the tractor. Remove the section of the grill as shown.



16. Notch the grill mounting casting with a grinder or by cutting. The notch should be 2 1/2 inches deep and 2 1/2 inches wide.

17. Install the coupler to the engine crankshaft and leave the set screw loose.

