

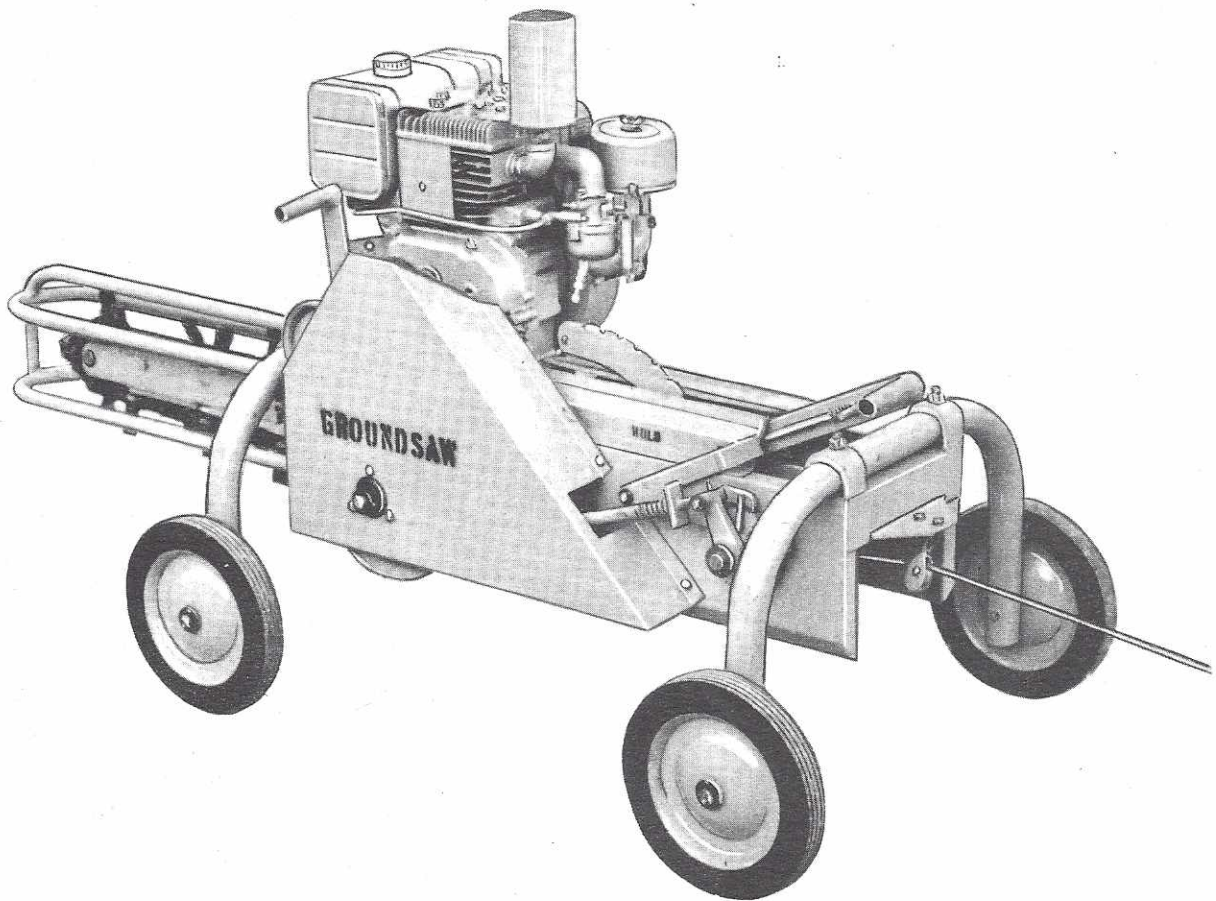


HAWK BILT

MANUAL SS358

MODEL 750

"GROUNDSAW" TRENCHER



HAWK BILT MFG. CORP.
VINTON, IOWA

Your decision to purchase a Hawk Bilt - 750 Groundsaw - trencher was a wise decision. Undoubtedly, you studied many other trenching methods on the market today. None can compare with the Hawk Bilt method of trenching.

The Model 750 Groundsaw has been marketed successfully for 4 years. When we put the Hawk Bilt label on a product, you can be sure it has been thoroughly tested. . . it is ready to give you full value for every dollar invested.

Please read the Warranty on page 2. Then, complete and return to us the Warranty Card which you will find in the sealed container with the manual. If we fail to receive this Warranty Card within 30 days following the purchase of a Model 750 Groundsaw, the Warranty is null and void.

Once again, "Thanks" for buying the "Groundsaw".

NOTE:

THE SERIAL NUMBER OF THIS MACHINE IS LOCATED ON THE LEFT SIDE OF THE CHASSIS.

WARRANTY

The Industrial Division of Hawk Bilt Mfg. Corporation warrants to each purchaser of the Hawk Bilt Groundsaw Trencher that such equipment is free from defects in material and workmanship for a period of ninety (90) days from the date of delivery to the purchaser. However, the boom accessory parts (cutting or digging chain and teeth, sprockets, and bearing) are expendable and do not carry the 90 day warranty. The company makes no other warranty, express or implied, in fact or by law.

The company's obligation under this warranty is limited to repairing, or at its option, replacing any part that is authorized to be returned, transportation prepaid, to the company's factory (or in case of engines, engine accessories, tires, hydraulic pumps or hydraulic controls that are warranted by original manufacturers, to such place as directed by Hawk Bilt Mfg. Corp.) that in the company's judgement is defective. Except as specifically provided in this warranty the company shall have no obligation or liability of any kind on account of its Groundsaw Trencher and shall not be liable for special or consequential damages.

NO RETURNED GOODS ACCEPTED, UNLESS AUTHORIZATION HAS BEEN RECEIVED FROM HAWK BILT.

CONTENTS

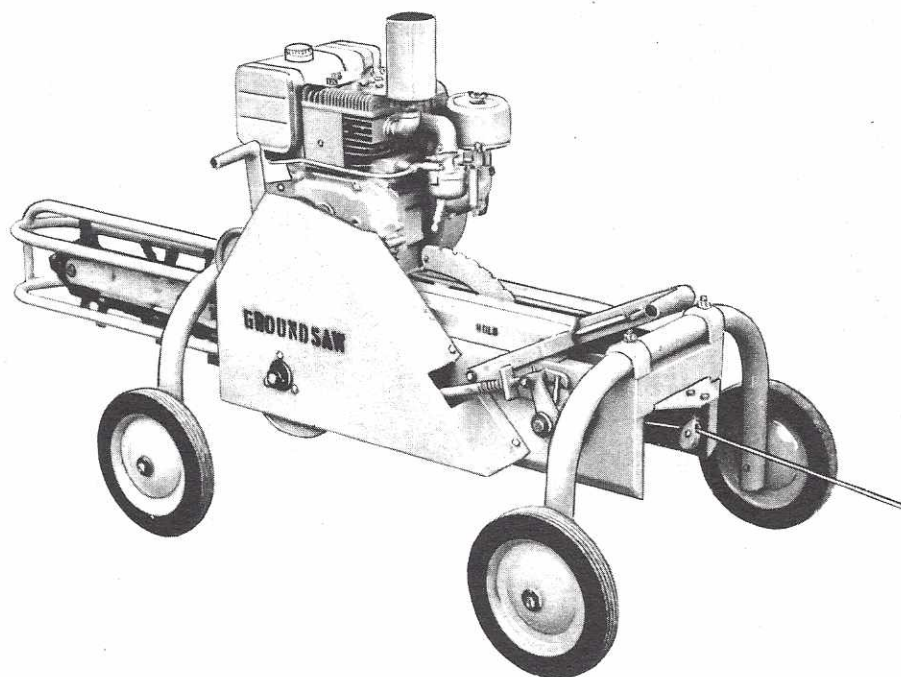
| | Page |
|---------------------------------------|-------|
| WARRANTY | 2 |
| GENERAL INFORMATION | 3 |
| SPECIFICATIONS | 4 |
| ASSEMBLY | 5 |
| LUBRICATION | 5 |
| ADJUSTMENTS | 5 |
| Engine Speed | |
| Belt | |
| Digger Chain | |
| Winch Cable | |
| Winch Pawl | |
| Winch Control Lever | |
| Timing of Cable Winch | |
| Cable Tension | |
| OPERATING INSTRUCTIONS | 6 |
| MAINTENANCE | 6 |
| SAFETY FIRST | 6 |
| REPLACEMENT PARTS & DIAGRAM | 7 & 8 |
| DIGGER CHAIN & COMPONENTS | 9 |

GENERAL INFORMATION

The Model 750 Groundsaw features a high speed, carbide tipped, digger chain. This self-cleaning, high tensile chain is designed to dig in what is ordinarily considered impossible soil conditions. Tree roots cause no problems and small rocks are either chipped up or rolled out of the trench. The closely spaced carbide tipped digger teeth saw through most obstructions. With the Groundsaw, wet and sticky soils do not carry back into the trench, and bothersome chain cleaning devices are not needed.

The machine is propelled by a self contained winch with automatic tension control for the cable. A cable stake is included with the machines.

Maximum depths of 12" - 18" or 24" are available with 2 1/4" or 3 1/4" trench widths.



SPECIFICATIONS

| | | | |
|-------------------|----------------------|-----------------------------|--|
| ENGINE | Standard Optional | Briggs & Stratton Kohler | 6 1/4 HP at 3600 R.P.M 6 1/4 HP at 3600 R.P.M. |
| CHAIN WIDTH | Standard Optional | | 2 1/4" 3 1/4" |
| DIGGING DEPTH | Standard Optional | | 18" 12" or 24" |
| OVERALL HEIGHT | | | W/10" Wheels W/out 10" Wheels 34 5/8" 26" |
| OVERALL WIDTH | | | 29 1/4" 17" |
| OVERALL LENGTH | | | 63 9/16" 60" |
| WEIGHT - Approx. | | | Crated Uncrated 290# 245# |
| TIRE SIZE | | | 1.75 x 10 |
| CONTROLS | | | Forward travel speed Depth of Boom Drive to digging chain |
| DRIVE CHAIN IDLER | | | Fiber Block |
| CABLE STAKE | | | Standard equipment |
| SAFETY | | | Shields over Drives Heavy pipe guard over digging chain. |
| PORTABILITY | | | One man transport One man operation |
| USES | | | Shallow cables, pipe, tubing |
| BEARINGS | | | Sealed for life ball bearings |
| HAND CRUMBER | | | See repair list (extra) |

ASSEMBLY INSTRUCTIONS:

1. Remove the Model 750 Trencher from the crate.
2. Bolt the axle to the chassis.
3. Check the engine oil. (Refer to engine manual
4. Lubricate the winch eccentric arm (2 grease fittings) with good quality gun grease.
5. Check to be sure the winch pawls move freely. It may be necessary to work them up and down by hand to free them.

LUBRICATION:

Oil pawls once a day.

Grease pawl pivot arm twice a day.

Oil wheel bearings once a week.

ADJUSTMENTS:

ENGINE:

Speed - 3600 RPM

Refer to Engine Mfg. Manuals.

BELT:

Tighten by adding additional washers under engine.

DIGGER CHAIN:

Normal digger chain adjustment should allow 1" to 1 1/2" of slack midway between sprockets. Adjust by loosening the two bolts on the Idler Yoke and sliding the Yoke on the boom slot. A Yoke block is used as a supplementary clamp in the Boom slot to prevent yoke slippage.

WINCH CABLE:

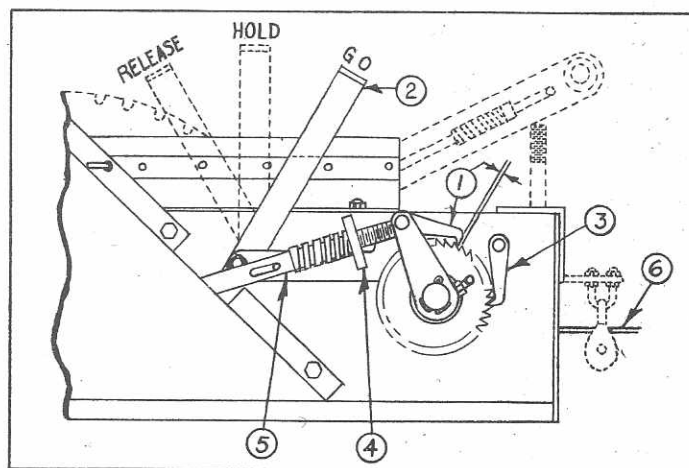
Tension is controlled by turning the adjusting lug on the front side of the spring on the Winch Push Rod. This automatically controls the forward speed.
(See picture 1 - page 5.)

WINCH PAWL:

Adjustment - See picture 1 - page 5.

WINCH CONTROL LEVER:

See picture 1 - page 5.



TIMING OF CABLE WINCH

Place winch control lever (2) in "GO" position. Rotate trencher drive shaft until winch push rod (5) is in full backstroke position. With slight pull on cable (6) adjust hold pawl (3) (Bolt hole is slotted) for 1/8" clearance as indicated for pawl (1).

CABLE TENSION

Turn lug (4) against spring for desired cable tension.

OPERATING INSTRUCTIONS

Place trencher at the starting point of the proposed trench. Drive stake at the other end of the proposed trench. Disengage pawls with the Pawl lever and unwind cable by pulling on the Hook. Attach Cable hook to the stake. Make sure drive is disengaged and digging chain is not resting on the ground.

START ENGINE: Engage digging chain drive. Lower trencher boom into the ground. Adjust winch control lever to desired ground speed. When trench is completed, raise trenching boom.

STOP THE ENGINE: Unhook the cable from the stake. Disengage winch control pawls by moving the control lever to the rear. Rewind the cable by turning the small hand crank, on the left end of the cable winch shaft.

MAINTENANCE

Do not overload engine.

Do not drop the machine.

Lubricate frequently.

Keep the chains properly adjusted.

Keep the bolts tight.

SAFETY FIRST

CAUTION!!!

DO NOT PUT FEET NEAR MOVING CHAINS

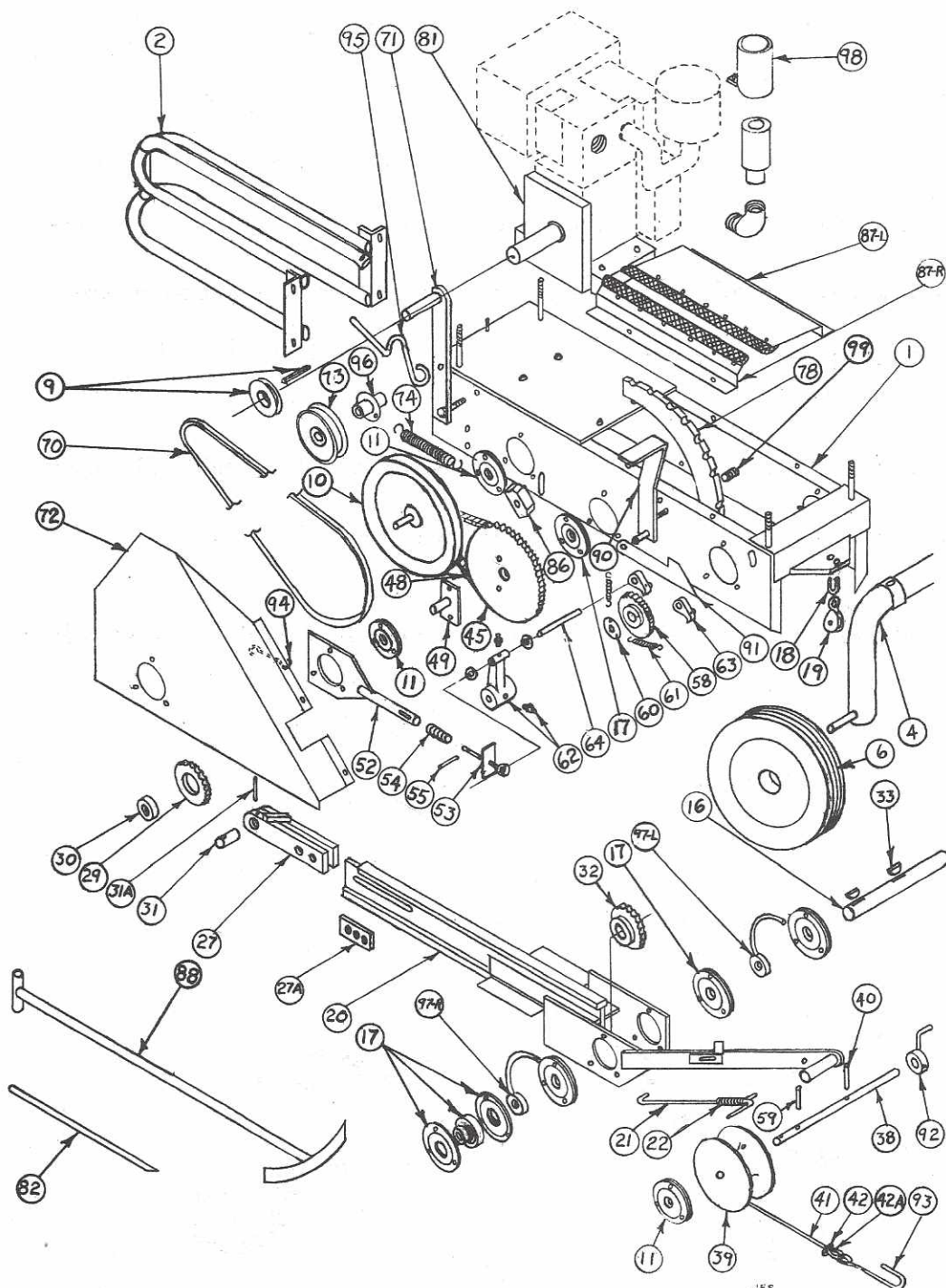
DO NOT OPERATE WITHOUT SHIELDS

KEEP HANDS AND LOOSE CLOTHING AWAY
FROM MOVING PARTS

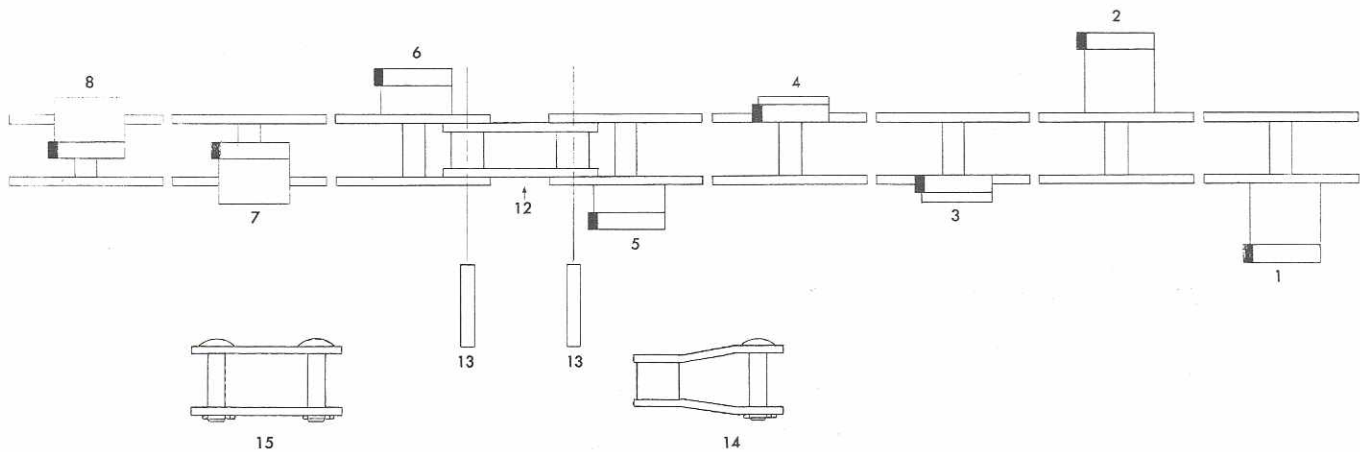
WHEN ORDERING REPLACEMENT PARTS BE SURE TO STATE:

A. Part Number B. Machine Model No. C. Machine Serial No.

| KEY NO. | PART NO. | DESCRIPTION | KEY NO. | PART NO. | DESCRIPTION |
|---------|----------|--|---------|----------|---------------------------------|
| 1 | 24010 | Chassis | 49 | 24063 | Eccentric Pin |
| 2 | 24152 | Boom Guard | 52 | 24066 | Push Tube Assembly |
| 4 | 24131 | Arched Axle | 53 | 24070 | Push Rod Assembly |
| 6 | 24135 | Wheels 1.75 x 10 | 54 | 24074 | Compression Spring |
| 9 | 24113 | Engine Drive Pulley | 55 | | 3/16 x 3/4 Roll Pin |
| 9 | 24114 | Square Key | 58 | 24083 | Winch Drive Ratchet |
| 10 | 24115 | Reduction Pulley & Spkt. Assy. | 59 | | 1/4 x 1 1/2 Roll Pin |
| 11 | 24079 | 3/4 Bearings w/Collar | 60 | 24084 | Spring Anchor Washer |
| 11 | 24170 | Flangettes Mounting for bearings (order 2 per bearing) | 61 | 24085 | Extension Spring |
| 16 | 24044 | Drive Shaft | 62 | 24418 | Pivot Arm |
| 17 | 24043 | 1" Bearing w/locking collar | 62 | 24087 | Grease Fitting |
| 17 | 24169 | Flangette mounting for bearings (2 per bearing) | 63 | 24004 | Winch Ratchet Pawl |
| 18 | 24577 | U-Bolt | 64 | 24076 | Drive Pawl Pin |
| 19 | 24578 | 1" Cable Pulley | 70 | 24122 | Drive Belt |
| 20 | 24153 | Trenching Boom 12" | 71 | 24101 | Belt Tightener Lever |
| 20 | 24027 | Trenching Boom (18 or 24") | 72 | 24123 | Chain Shield |
| 21 | 24041 | Lever Lock Rod | 73 | 24107 | Belt Tightener Pulley |
| 22 | 21022 | Compression Spring | 74 | 24124 | Belt Tightener Spring |
| 27 | 24051 | 12" or 18" Yoke | 78 | 24020 | Lever Quadrant |
| 27 | 24094 | 24" Yoke | 81 | 24108 | 6 H.P. Engine |
| 27A | 24059 | Yoke Tightener Block | 82 | 24416 | Anchor Stake for Cable |
| 29 | 24055 | Digger Chain Idler Sprocket | 86 | 24582 | Tightener Block for Chain |
| 30 | 24056 | Idler Bearing | 87R | 24092 | Soil Shield Over Winch Assy. R. |
| 31 | 24057 | Idler Shaft | 87L | 24129 | Soil Shield Over Winch Assy. L. |
| 31A | | Roll Pin 3/16 x 2 | 88 | 24551 | Crumbler for 2 1/4 inch Trench |
| 32 | 24045 | Drive Sprocket | 88 | 24552 | Crumbler for 3 1/4 inch Trench |
| 33 | 24046 | 808 Woodruff Key | 90 | 24095 | Winch Control Lever |
| 38 | 24080 | Winch Shaft | 91 | 24099 | Winch Control Lever Cam |
| 39 | 24081 | Cable Drum | 92 | 24088 | Winch Crank |
| 40 | | 1/4 x 2 Roll Pin | 93 | 21117 | Cable Hook |
| 41 | 24091 | 1/8" x 50' Cable | 94 | 24125 | Spring Hook |
| 42 | 21137 | Cable Clamp | 95 | 24104 | Belt Release Hook |
| 42A | 24093 | Thimble | 96 | 24105 | Idler Spacer Bushing |
| 45 | 24060 | Sprocket | 97R | 24047 | Spoils Spreader - Right |
| 48 | 24120 | Roller Drive Chain | 97L | 24048 | Spoils Spreader - Left |
| 48 | 24121 | Connecting Link for # 50 Chain | 98 | 24110 | Muffler Shield |
| | | | 99 | 24098 | Compression Spring |



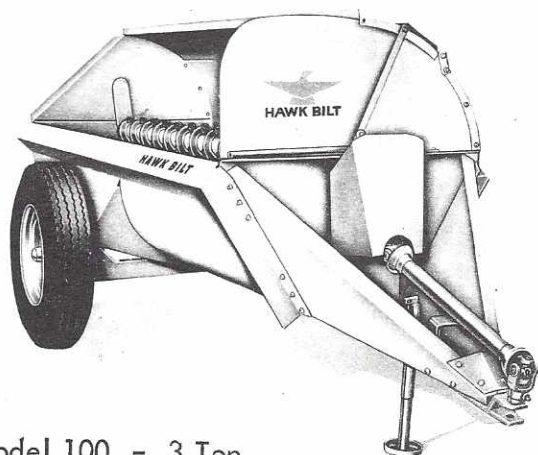
DIGGER CHAIN & COMPONENT PARTS



| KEY NO. | PART NO. | DESCRIPTION |
|---------|----------|------------------------------------|
| 1 | 24573 | 3 1/4 Tooth Assembly |
| 2 | 24574 | 3 1/4 Tooth Assembly |
| 3 | 24569 | 1 1/4 Tooth Assembly |
| 4 | 24567 | 1 1/4 Tooth Assembly |
| 5 | 24568 | 2 1/4 Tooth Assembly |
| 6 | 24570 | 2 1/4 Tooth Assembly |
| 7 | 24571 | Center Tooth Assembly |
| 8 | 24572 | Center Tooth Assembly |
| 12 | 24586 | Roller Link |
| 13 | 24575 | Pin Riveted |
| 14 | 24138 | Offset Connector Link W/Pin |
| 15 | 24213 | Connector Link W/Pins |
| | 24154 | 2 1/4 x 12 Digger Chain - 20 Teeth |
| | 24155 | 3 1/4 x 12 Digger Chain - 20 Teeth |
| | 24136 | 2 1/4 x 18 Digger Chain - 24 Teeth |
| | 24147 | 3 1/4 x 18 Digger Chain - 24 Teeth |
| | 24150 | 2 1/4 x 24 Digger Chain - 28 Teeth |
| | 24151 | 3 1/4 x 24 Digger Chain - 28 Teeth |

HERE ARE SOME OTHER HAWK BILT PRODUCTS

CHAIN FLAIL MANURE SPREADERS



Model 100 - 3 Ton
Model 145 - 4 Ton
Model 200 - 6 Ton

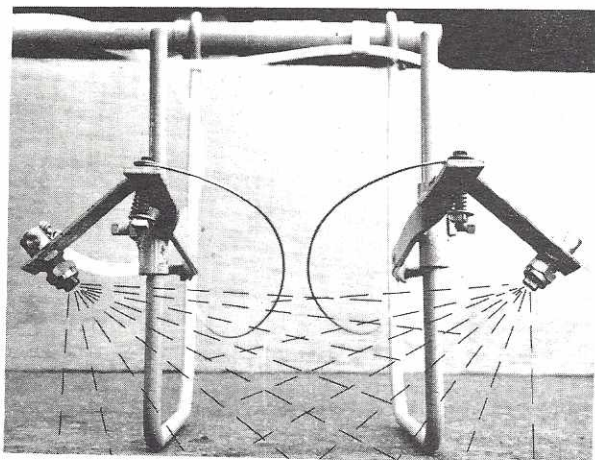
LIQUID MANURE SPREADER



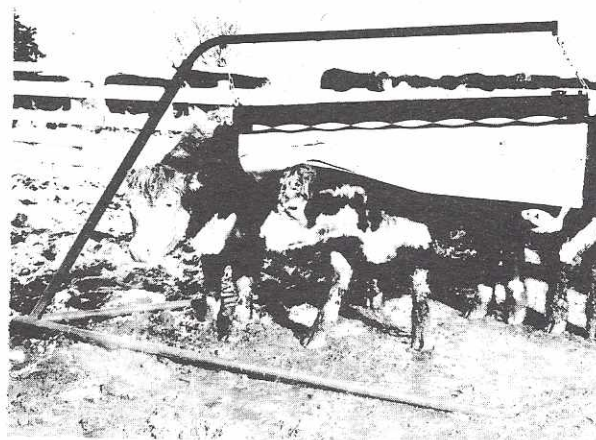
1000 Gallon Capacity



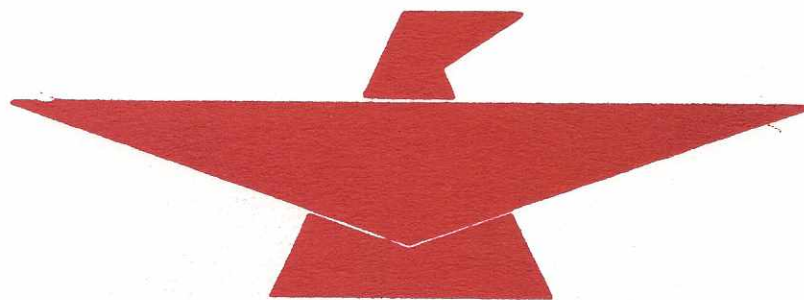
TRACTOR MOUNTED
GROUNDSAW TRENCHER



LEAF LIFTER SPRAYER



CATTLE OILER
With Portable Stand



HAWK BILT

Printed in U.S.A.